

TRACKREPORT

TEST ANALYSIS & REPORT GENERATION SOFTWARE



ASAM Compliant

REPORT GENERATION

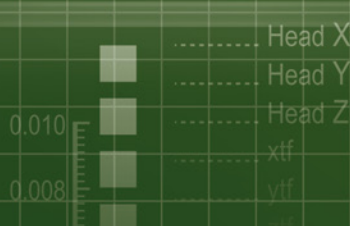
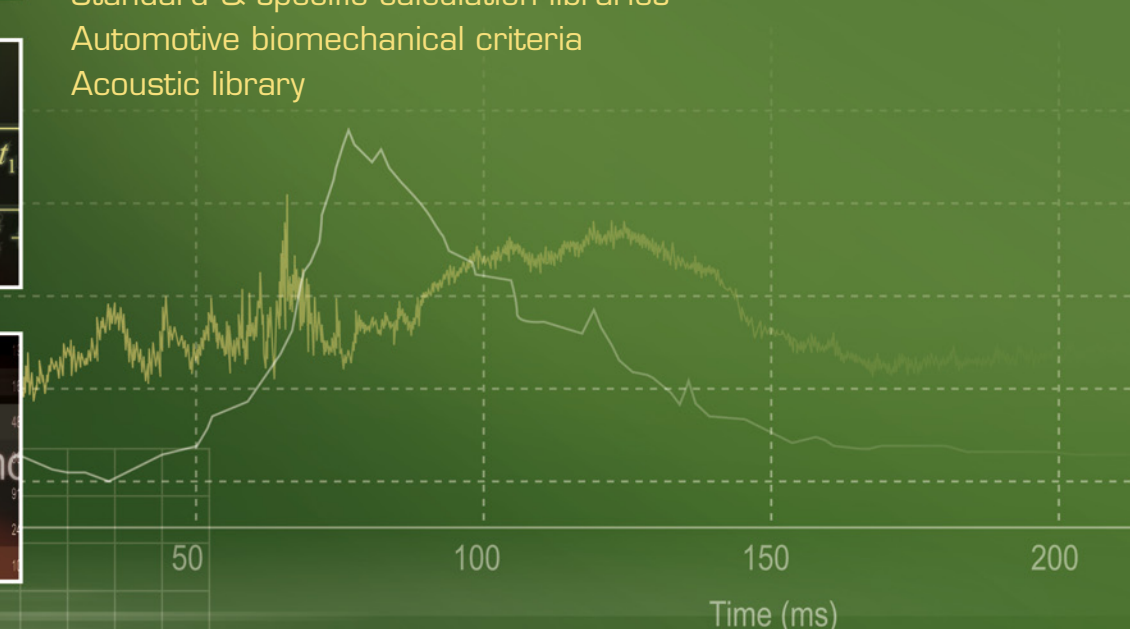
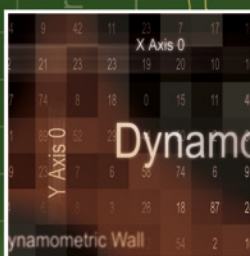
Graphic design of test report templates
Automatic channel assignment
Curve and video synchronization
Various exports (html, avi...)

ALGORITHM DEVELOPMENT

Standard & specific calculation libraries
Automotive biomechanical criteria
Acoustic library

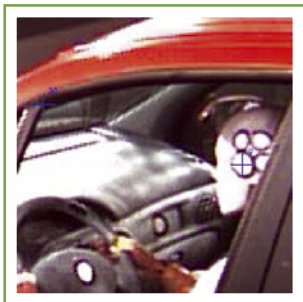


$$a = \sqrt{a_x^2 + a_y^2 + a_z^2}$$
$$HIC = \sup_{t_1, t_2} \left\{ \frac{1}{t_2 - t_1} \right\}$$
$$a = \sqrt{a_x^2 + a_y^2 + a_z^2}$$



ORME
Signals & Images

DATA ANALYSIS



TrackReport offers a full data visualization and analysis environment, where interactivity and automation help creating simulation or test reports. Configurable report templates handle data post-processing algorithms as well as the graphical setup. The development of these report templates is very intuitive and smooth, thanks to the various calculation libraries and a complete and dynamic graphical object suite: text areas, curves, tables, images, videos, color maps, bar charts, 3D-animations... The report templates thus enable the generation of an accurate data set analysis and the corresponding report.

Although being a standard and generic tool, TrackReport's architecture remains open, enabling the user to develop specific data import/export functions, or new calculation libraries. TrackReport is now widely used to analyze and compare test and simulations in various fields: automotive, aeronautics, space, cosmetics, energy, defense...

EASY TO USE

- Graphical setup of test report templates*
- Computer-aided algorithm development*
- Automated unit management*

INTERACTIVITY

- Interactive report templates through customized dialog boxes*
- Cursors, animations...*

AUTOMATION

- Automation of report edition tasks*
- TrackReport control and interactivity with other applications*

ANALYZE

- Superposition mode for data set comparison*
- 3D visualization, synchronizations, and animated exports*

COMPATIBILITY

- Import of various data file formats*
- ASAM-ODS database connection*

OPENNESS

- Plug-in architecture for calculation and import/export functions*
- Software development kit for new functions*

MODULES

TRACKREPORT STANDARD EDITION



Report template creation

- Graphical creation of test report templates
- Dynamic text areas, 2D-curves, bar charts, tables, color maps, images, videos, image sequences

ms	Y
0.02	231.441
0.04	232.672
0.06	234.294
0.08	235.207

Import of various data formats

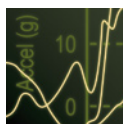
- Standard formats
- ASCII files reader wizard
- Specific imports plug-in

$$F = \sqrt{(m \cdot a_x)^2 + (m \cdot a_y)^2}$$

with:
 m : Mass of the head
 a_x : head acceleration
 F : upper neck force

Calculation libraries

- Mathematics, statistics, interpolation...
- Dialog boxes definition
- Specific libraries plug-in



Automatic report generation

- Interactive analyses
- Animations, cursors
- Data synchronization
- Data set comparison/superposition



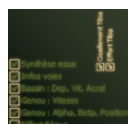
Automated unit management

- Smooth unit recognition, conversion and management
- Automatic learning of new units



Results and data exports

- Standard formats
- ASCII formats
- Specific exports plug-in



Report export

- Animated HTML reports
- Image exports
- Print...

```
function minmax
c = {
  curve = track
  return (curve)
}
for i = 1, nbPo
  t[i] = (1 - a[i]) * a[i]
end
a[i] = a[i]
```

User programming

- TrackL Language, Visual C++ SDK
- Tasks automation using Java Scripts



ASAM-ODS Client Module

- ASAM-ODS database connection
- Data import/export
- Advanced search



Crash-Tests Calculations Module

- CFC filters, biomechanical criteria (neck, head, chest, leg...)
- Restraint systems norms
- Regulation implementation



3D Module

- 3D graphical object
- VRML import / export
- Navigation and animations



Acoustic Calculations Module

- A, B, C weighting, narrow-band, octave or third-octave conversion, OASPL, PNL, TC...
- Regulation implementation

SERVICES

- Report template writing
- Report template maintenances
- Specific calculation libraries development
- Specific import/export formats development

TRAINING

- TrackReport standard use
- TrackL language development
- Java Script for TrackReport
- Visual C++ plug-in development

Y Axis (m.s-2)

200
150
100
50
0

ORME COMPANY

Founded in 1996, ORME is your partner for the development of test analysis tools. To meet the increasing needs of the test field, on the one hand we develop a complete software product suite, and on the other hand we can offer custom-made software and hardware solutions, as well as test analysis service and consulting. We pay particular attention to keep a very close relationship with our customers, and remain attentive to their needs. Over twenty years of experience have enabled us to become a well-recognized and favored key contact of many key industrial companies.

SOME OF OUR CUSTOMERS:

ABB, Adient Aerospace, Airbus, Airbus Defense & Space, Aptiv, ARAI, Autoliv, BMC, Bosch, Brakes India, CEA, CED, CNES (CSG Kourou & Toulouse), DGA, Dongfeng-Peugeot, Dorel, EDF, Faurecia, FIA, Fujian-Benz, Hero Motors, ICAT, IFSTAR, Ipeco, Karma, Latécoère, Legrand, L3Harris, Leroy Somer, L'Oréal, Lucid Motors, Maruti Suzuki India, MGA Research, Martur, Nissan, ONERA, Peugeot-Citroën, Proma, RATP, Renault, SAFRAN (Aircraft Engines, Helicopter Engines, Landing Systems, Seats), Saint-Gobain, Salomon, Schneider Electric, SERMA, STAC, Team-Text, Thalès Alenia Space, Tissé, Transpolis, Trelleborg, TSTech, UTAC, Valeo, Wabtec...



FRANCE - MAIN OFFICE

21 rue du Village d'Entreprises - Bât 7 - 31670 Labège
+33 5 61 00 25 70
www.orme.com - info@orme.com

AMERICAS - REPRESENTATIVE OFFICE

2 Bloor Street West - Suite 700, Toronto, ON M4W 3E2, Canada
+1 647 917-1711
arnaud.seigne@orme.com

BENELUX - SPAIN - PORTUGAL

IDT Europe bvba
Eekhoornstraat 22 - B-3920 Lommem, Belgium
+32 11 551065
www.idteurope.eu - info@idteurope.eu

FINLAND

CHEOS
Sinimäentie 8B - 02630 Espoo
+358(0)20 1986464
www.cheos.fi - sales@cheos.fi

INDIA

Megatech Engineering & Services Pvt Ltd
A2/10 Tapovan, Dongre Park, Chembur, Mumbai 400074
Phone: +91-22-2553 6023; 2553 4471; 2553 7579
Fax: +91-22-2553 2317
sales@megatechengg.in

ITALY

HI-TEC
Via Agrigento 9 - Milano
+39 02 3271914
www.hi-tec.it - hi-tec@hi-tec.it

JAPAN

Marubun Corporation
8-1, Nihonbashi Odenmacho, Chuo-Ku, Tokyo 103-8577
+81 3 3639 9881
www.marubun.co.jp - takahiro_takahashi@marubun.co.jp

KOREA

JAT Co., Ltd.
#309 APEX CITY, 823 Dongtansunhwan-daero,
Hwaseong-si, Gyeonggi-do, 18471
Phone: +82 31 726 5033 - Fax: +82 31 726 5071
www.jatweb.co.kr - jat@jatweb.co.kr

SOUTH AFRICA

Horne Technologies cc
PO Box 536, Betty's Bay, 7141
+27.76.127.3796
www.hornetechnologies.co.za - david@hornet.co.za

UK

IDT (UK) Ltd
Eastway House - 7 Paynes Park - Hitchin - Herts - SG5 1EH
+44 1462 621124
www.idtvision.co.uk - info@idtvision.co.uk